

INSTALLATION GUIDE FOR Retrofit



Before commencing installation

Please read this guide carefully, and
keep it handy for future reference



All materials and content in this quick start installation guide are the property of Serene Steam, and are protected under United States and/or International copyright and other intellectual property laws.

All content described, opinionated, or implied within this manual are subject to change without notice.

Serene Steam is a registered trademark.

Copyright © Serene Steam - All Rights Reserved

United States and International patents granted and/or pending.



Important Notes Before You Begin

Please Read

All product parts and system models displayed in this manual may appear slightly different from your system ordered due to product upgrades, enhancements etc. and are subject to change without notice.

Required Parts For Installation

You will require several, general “Off the Shelf” plumbing parts for the installation which are not supplied as these parts will depend on a few factors such as the size water tubing your home uses, or perhaps you are doing a remodel or new construction etc. Once your plumber begins the installation process, he/she should know exactly which parts, or attachments to adapt to the Serene Steam system. Your installation may require further general parts from your local store that may not have been displayed here.
(any additional parts that are not listed should be basic, and a plumber or contractor should know).



Set your water heater to 135 - 140F for best results

Serene Steam is in compliance with IAPMO - IGC- 154-2019 Standard.

This is a retrofit installation guide, each install may therefore require custom adaptations as each shower enclosure may differ from the next. This manual details a preferred method for installing. However, your method may differ slightly due to the construction and configuration of your particular shower.

The only step that cannot differ is the spa floor (mandatory)

The following basic tools and parts are required.
Not supplied with a Serene Steam purchase.



1 inch hole saw



1-5/8 inch hole saw for tile and ceramic



1/4 inch drill bit for tile and ceramic



5/16 wrench



Additional unknown plumbing components may be required for your specific shower enclosure.

PLEASE READ

Essential requirements before installing Serene Steam

Your water heater



Set your water heater to at least 135-140°F for best results. Serene Steam use is *IAPMO Certified & meets IGC-154-2019 standard.*

Your shower water pressure



Standard household water pressure should be between 50 and 55 PSI for best results.

Please check your water regulator is up to code, 50 PSI.

Your shower enclosure **must be sealed** and adapted correctly for steam use.

BEFORE YOU BEGIN



1. Make sure that you install Serene Steam on the **FRONT WALL** and in the center, so that it will be facing the bench where the user will be seated.

Do not install Serene Steam on a side wall or in a corner.

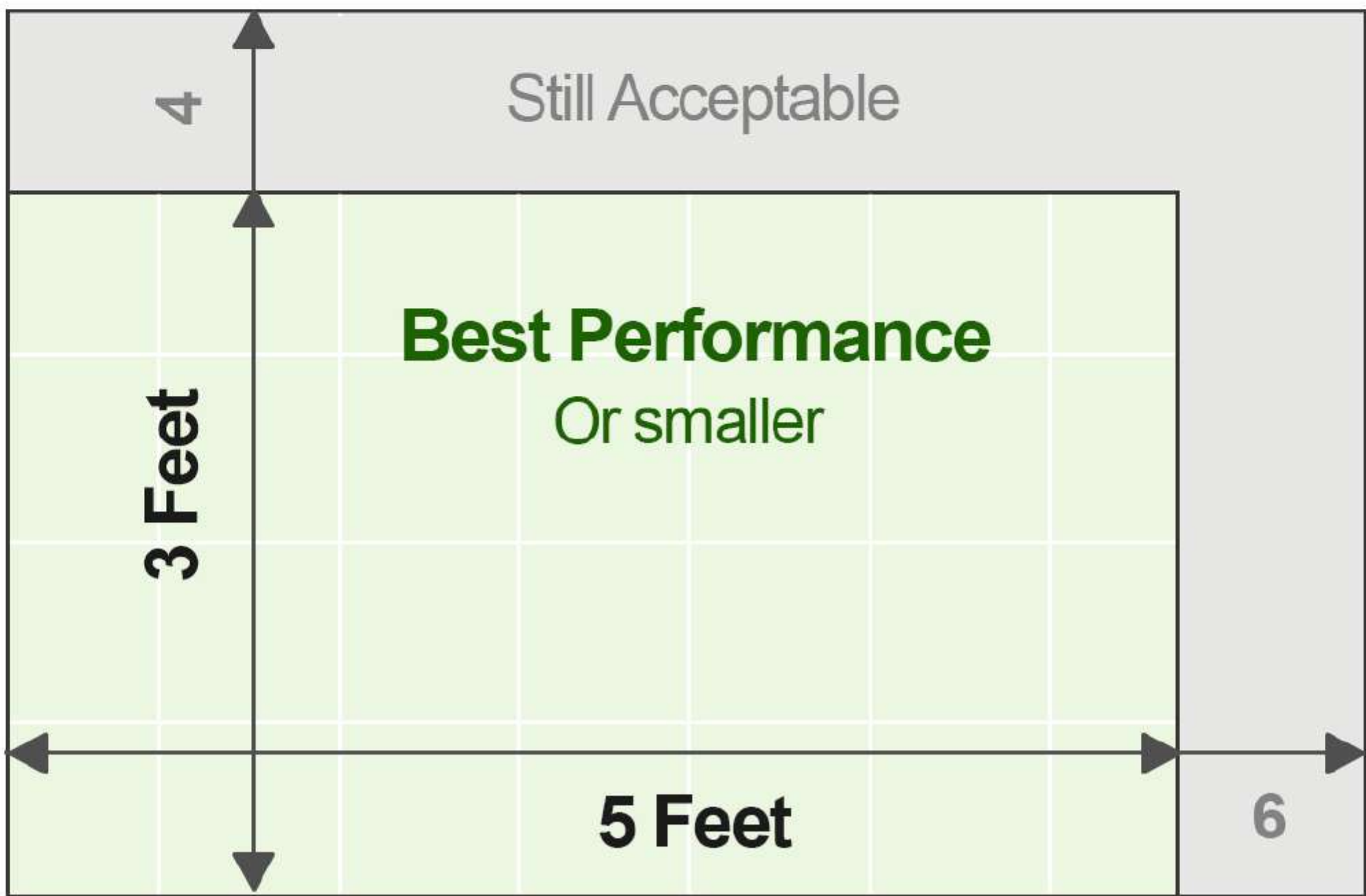
2. It is **MANDATORY** to install the supplied spa floor when using the Retro-Fit model. No exception.

3.

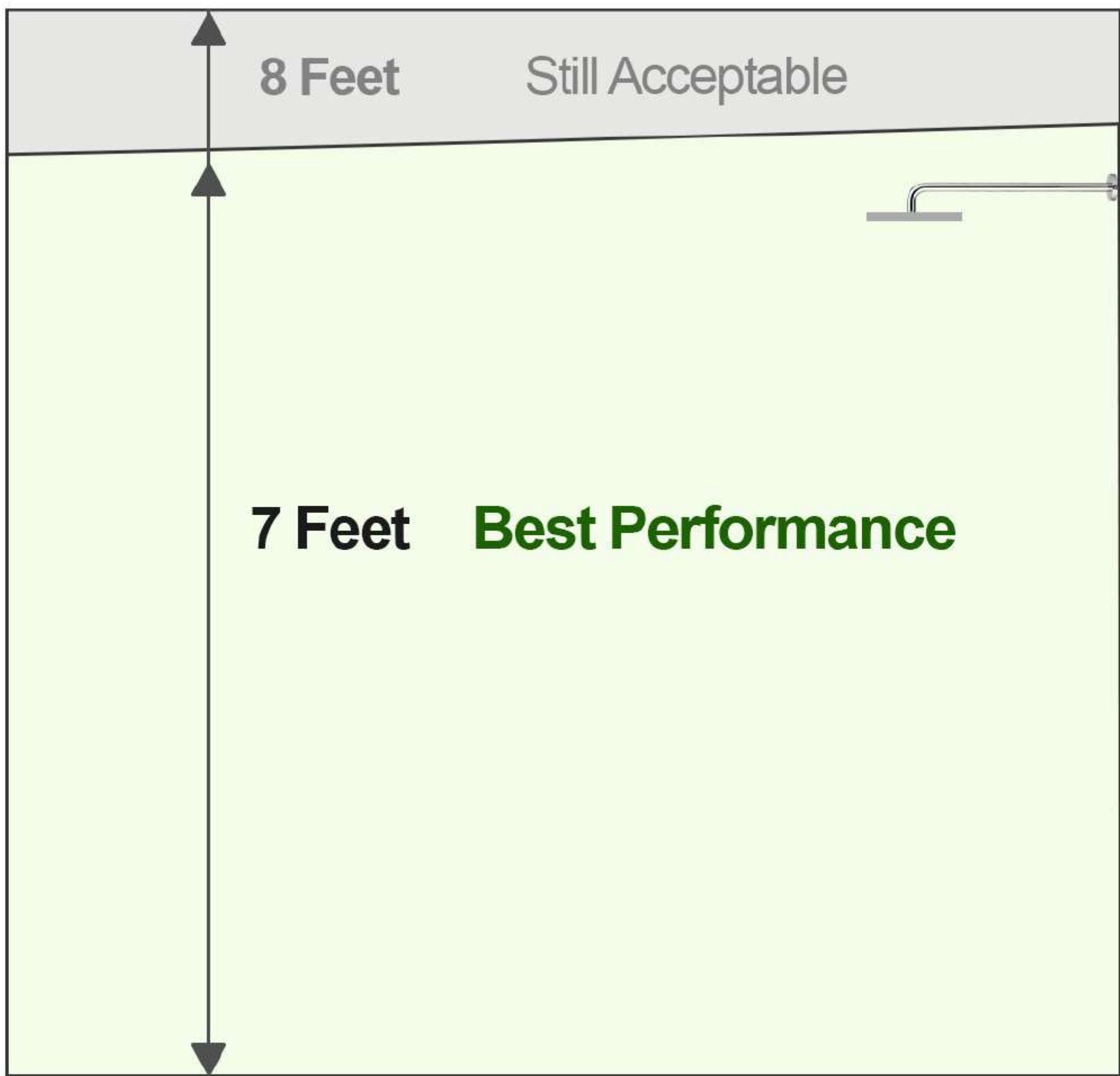
For best results, please read

The following descriptions below would be considered the **preferred requirements** for your shower size when using a Serene Steam spa.

SHOWER FLOOR



SLANTED SHOWER CEILING HEIGHT



The general concept of installing a Serene Steam Retrofit model

Tee into an existing hot water line which will connect to the Serene Steam system. This can be achieved using several methods.

We have displayed a sample video below as one example. The best known method may be locating the hot water line directly off your shower's mixing valve, but other possibilities may be suitable as well, based on your unique shower location and plumbing etc.



Please scan this QR code with your mobile device to view video.

Your shower's hot water line may be accessible in a different location and require a different method from what is shown in this sample video.

Please watch this short video to understanding the general plumbing process for installing the Retro-Fit model into your shower enclosure.

The step-by-step install guide begins on the following page.

Please begin your installation as follows



This is a required step

Installing the spa floor



STEP 1

Start by laying down the first row of tiles by interlocking them. They must fit wall to-wall on your shower floor. Make any adjustments as necessary.

If your tiled spa floor has been pre-cut at our factory, then lay them down from top left to right in the number sequence that they are labelled with as shown.

Complete the tiling process until all tiles are in place and completely cover your shower floor as shown



Installing the spa floor

STEP 2

Place the cardboard template firmly up against the front wall where the steam unit will sit on top of the tiled floor and up against the wall, and place it as close to the center of the shower wall as possible.

Important note:

This hole must have enough tile to drill into. If this hole ends up over an open are between tiles, move the template over slightly so that a 1/4 inch drill bit will be able to have enough tile to drill into, but still keeping the template as close to the center as possible.



Use a level to make sure that the template is perfectly straight, and temporarily tape it down firmly as shown (masking tape provided).

Once it is firmly in place, please use the level again to make sure that the template is indeed straight, and sitting correctly on top of the tiled floor.



Installing the spa floor



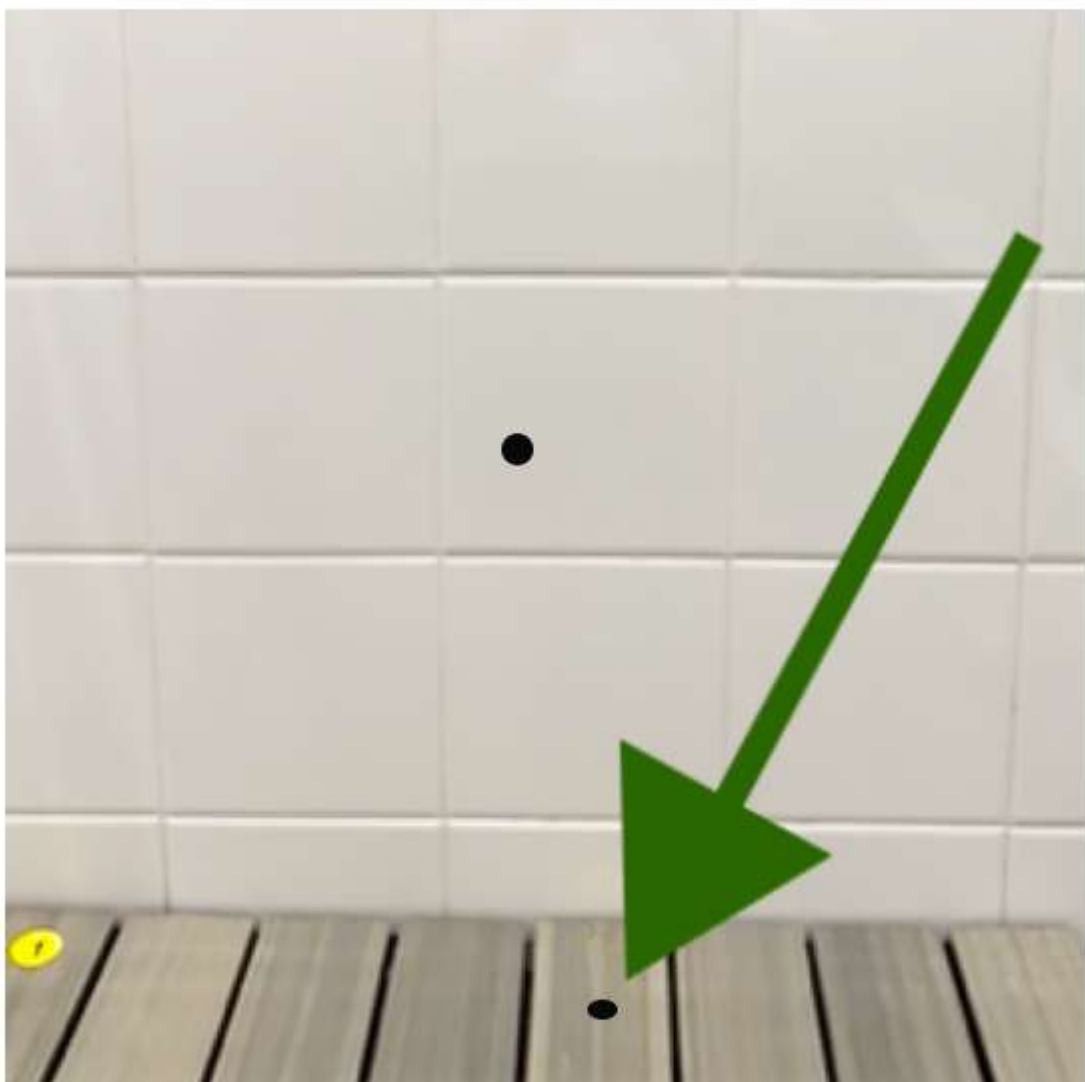
STEP 3

With the cardboard template firmly in place against the wall, and on top of the spa floor, mark the holes clearly with a marker in all 4 of the locations as shown.



After you have made the markings from the holes on the emplate, remove the template and you will have 3 markings on your wall, and 1 marking omn your spa floor.

Installing the spa floor



STEP 4

You will be drilling a 1 inch hole into the marked location of your spa floor. Use a 1 inch hole saw.



Important note:

Lift the individual tile of the spa floor before drilling so that the new 1 inch hole can be easily drilled.

Once the drill bit is correctly aligned against the marked point, drill the 1 inch hole as shown.



After you have drilled the hole, cut away any excess plastic underneath the tile as shown.

Installing the spa floor



STEP 5

Now that you have drilled the 1 inch hole as shown, you can attach all the spa floor tiles and complete the shower floor as shown.

**Your spa floor
is complete**



Check that the floor fits correctly wall-to-wall

Shower wall preparation

You may now begin the water connection steps by drilling the necessary holes in the shower wall. **Important note:** Please make sure that you are drilling in a safe wall location that will not damage any possible inner-wall components which may be present in this area.

BEFORE

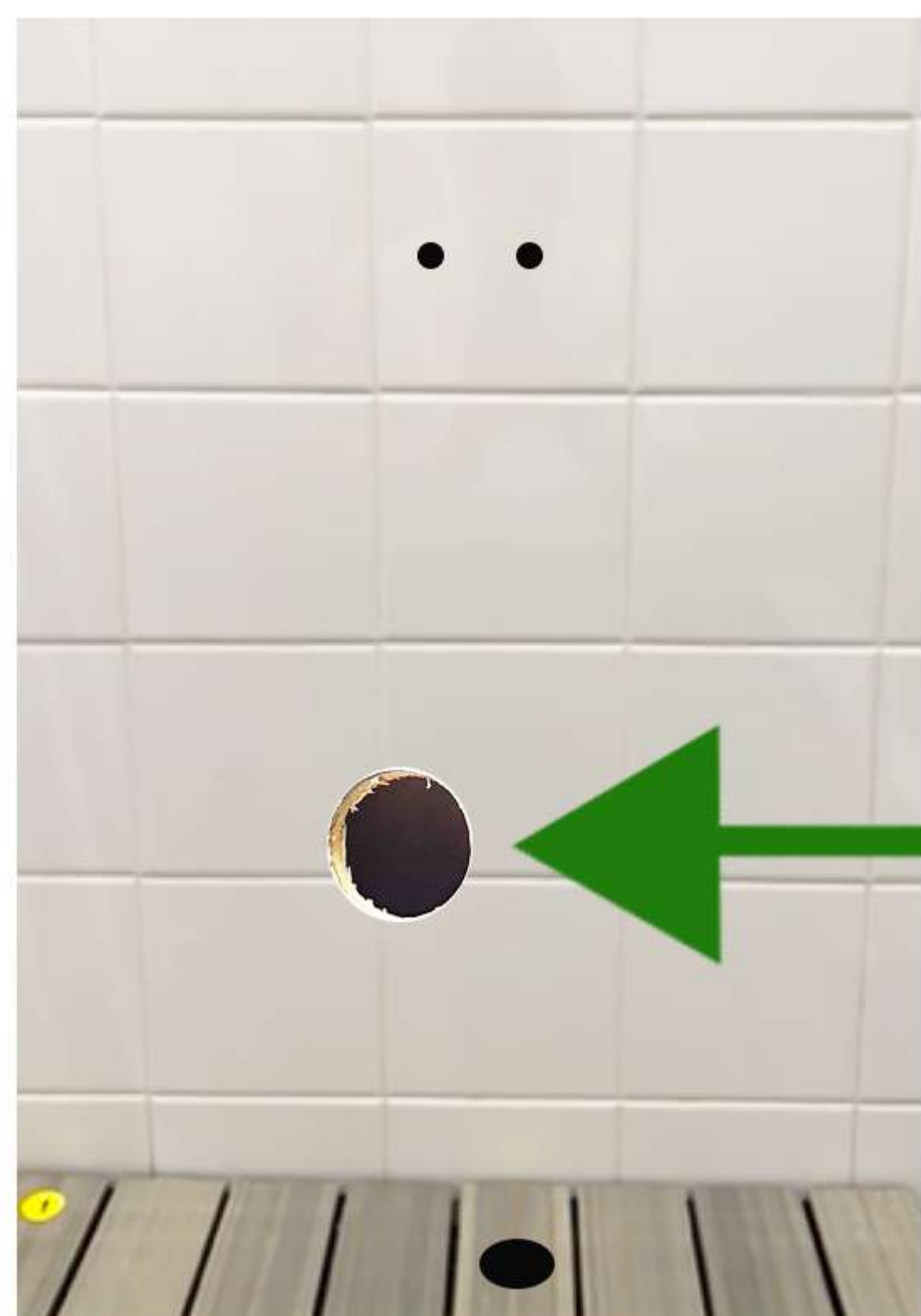


STEP 6

1-5/8 Diamond Hole Saw

Using the 1-5/8 tile hole saw, slowly drill a hole through the tile to create an opening which will allow you to insert the 1/2 inch Pex tubing to a hot water line. Drill through the **bottom** marked location as shown.

AFTER



This is how your wall should now appear with the 1-5/8 hole drilled.



Enlarged image of hole

Shower wall preparation

STEP 7

Now drill the 2 top holes using a 1/4 inch tile drill as shown here.



Recommended drill bit
BOSCH Carbide Tipped
Glass, Ceramic and Tile
Drill Bit



STEP 8

Insert the included red wall anchors firmly inside the 2 wall holes as shown.



Enlarged image

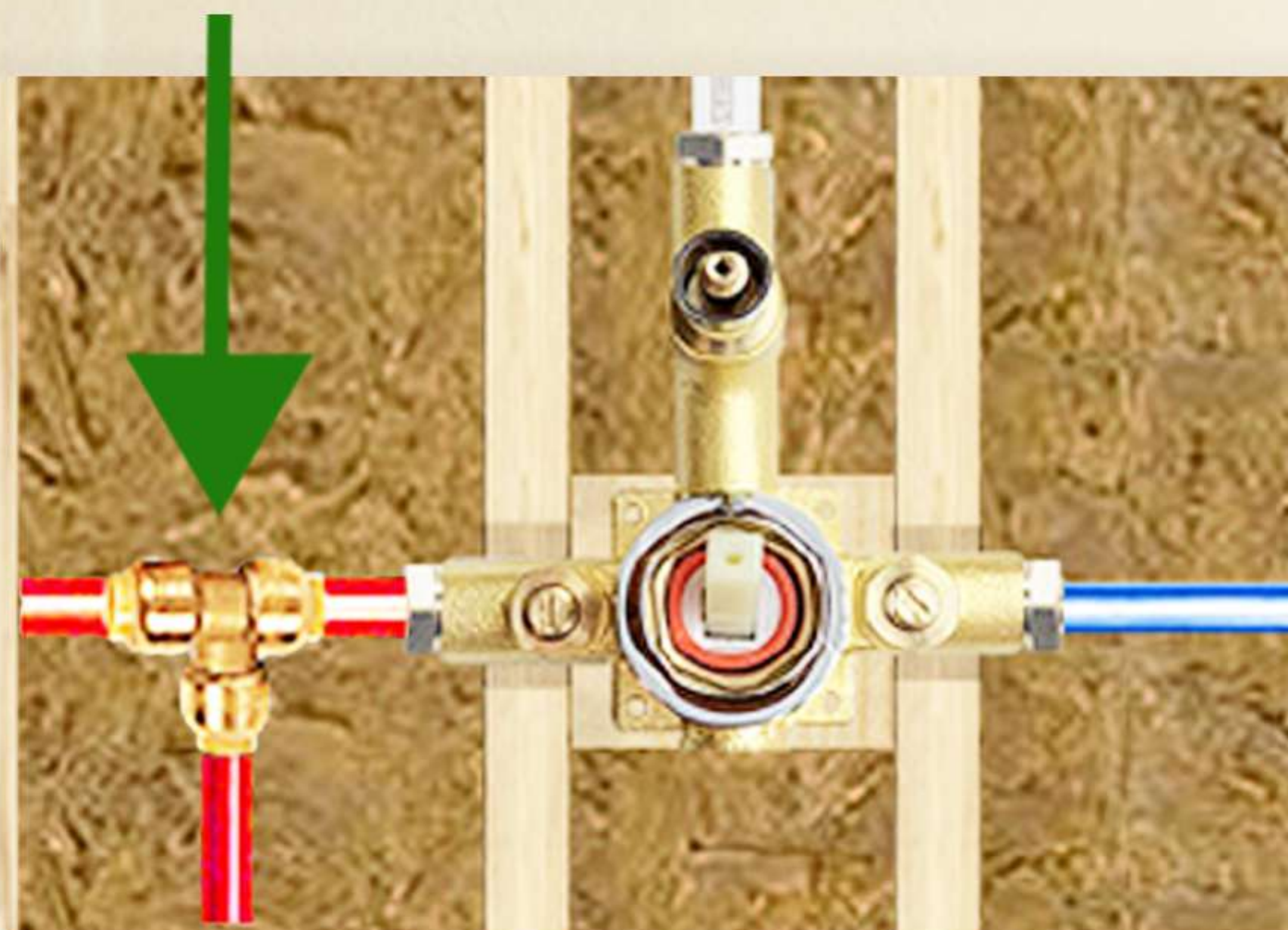
Connecting the hot water line

You are now ready to connect to a hot water line

IMPORTANT NOTE

In our image below we have displayed the recommended method of tapping into a hot water line. However, due to the nature of this installation being a retrofit, you may either **1.** not have the access as displayed below, or **2.** prefer a different method of tapping into a hot water line. In either event, **please follow this guide with the same principals as recommended**, so that your installation is successful resulting in a correctly functioning unit.

Hot water line



Notice how we have displayed a good method for tapping into a hot water line directly off your shower's mixing valve.

Accessing this hot water line may be accessible either from the front or rear of your shower wall.

Connecting the hot water line

BEFORE you connect the hot water line

Regardless of your preferred hot water line connection, please proceed with **this step first**, attaching the supplied shut-off valve apparatus to the 1-5/8 inch hole as shown **BEFORE** connecting the Pex tube to your hot water line.



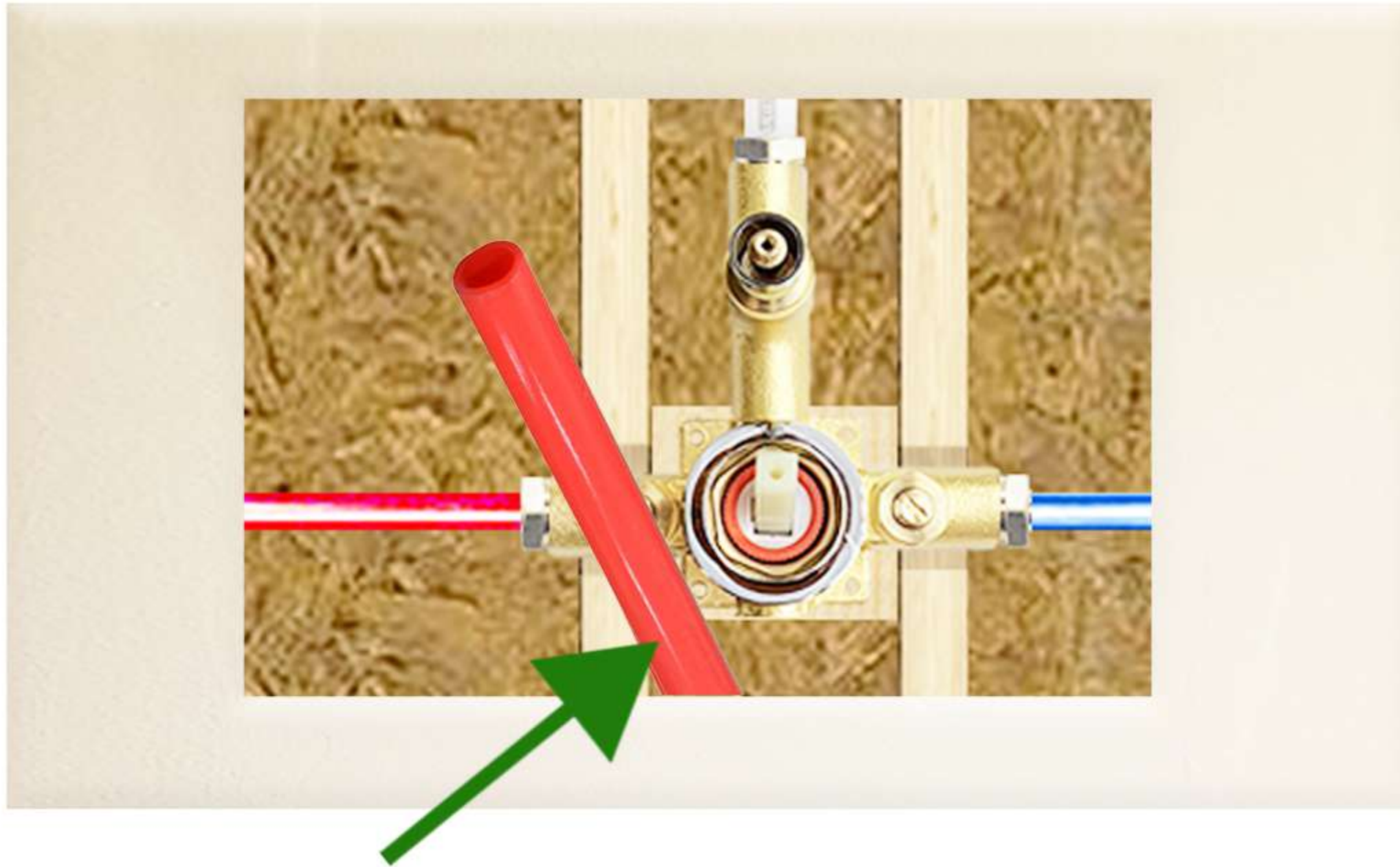
STEP 9

Insert a 1/2 inch Pex tube through the 1-5/8 inch hole until the other end reaches your connection point.

We recommend Pex as it is flexible, and will be easier to manoeuvre through your wall with a bit of effort.

Leave at least 8 inches as shown so you can handle it easily.

Connecting the hot water line



Here is how the other end (connection end) should now appear. The Pex tube has been manoeuvred through the wall using our sample connection location.

DO NOT make this water connection yet. First complete the next step below.



STEP 10

Attach the shut-off valve apparatus to the Pex tube.

Please **make sure** that the connection is made correctly. The Sharkbite fitting should extend approx. 1 inch over the Pex tube as shown.

Connecting the hot water line

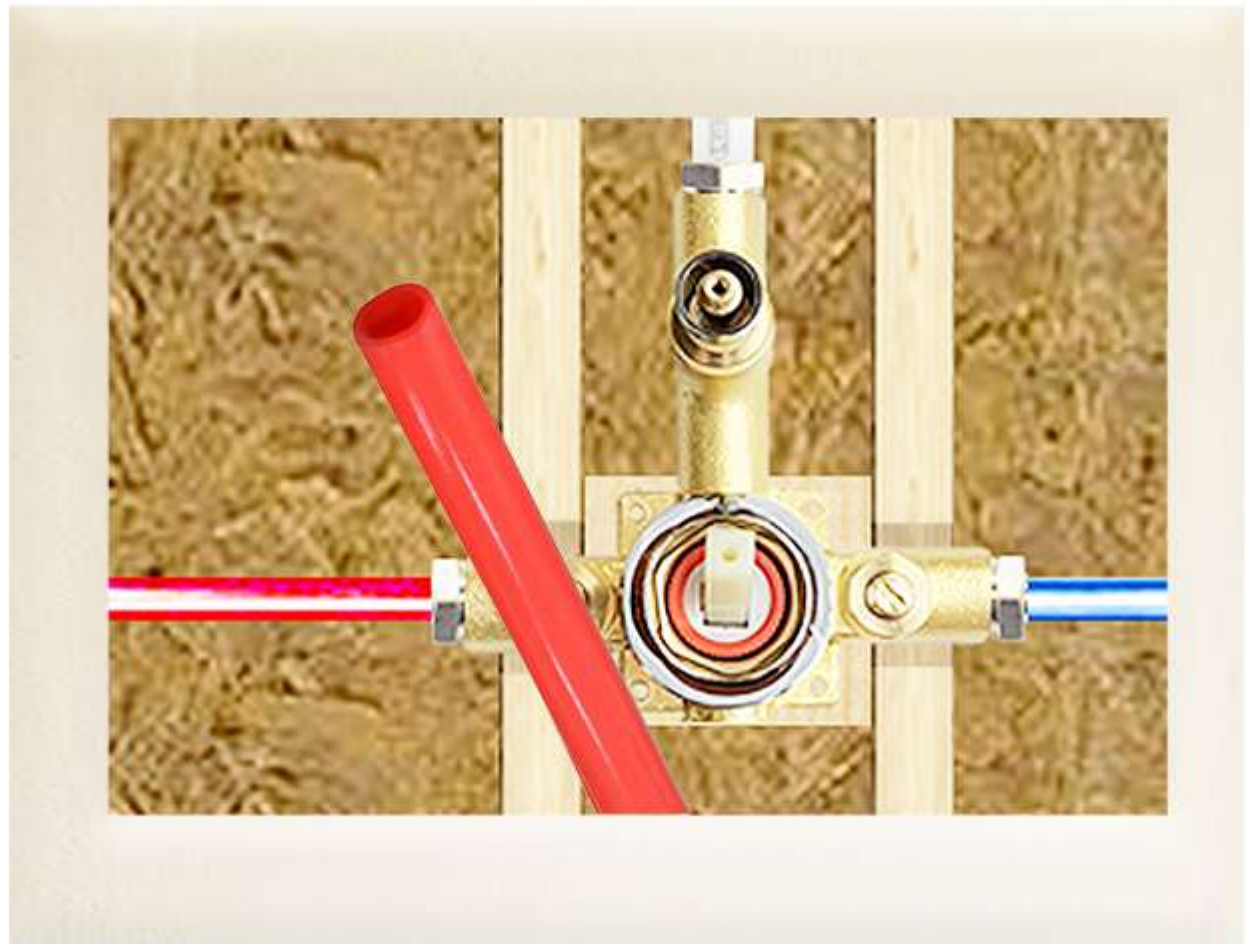


STEP 10

Drill two 1/4 inch holes through the tile using the 1/4 inch drill bit and align the shut-off valve apparatus in a **vertical position** so it can be affixed to the wall. Use the red red anchors and screws provided.



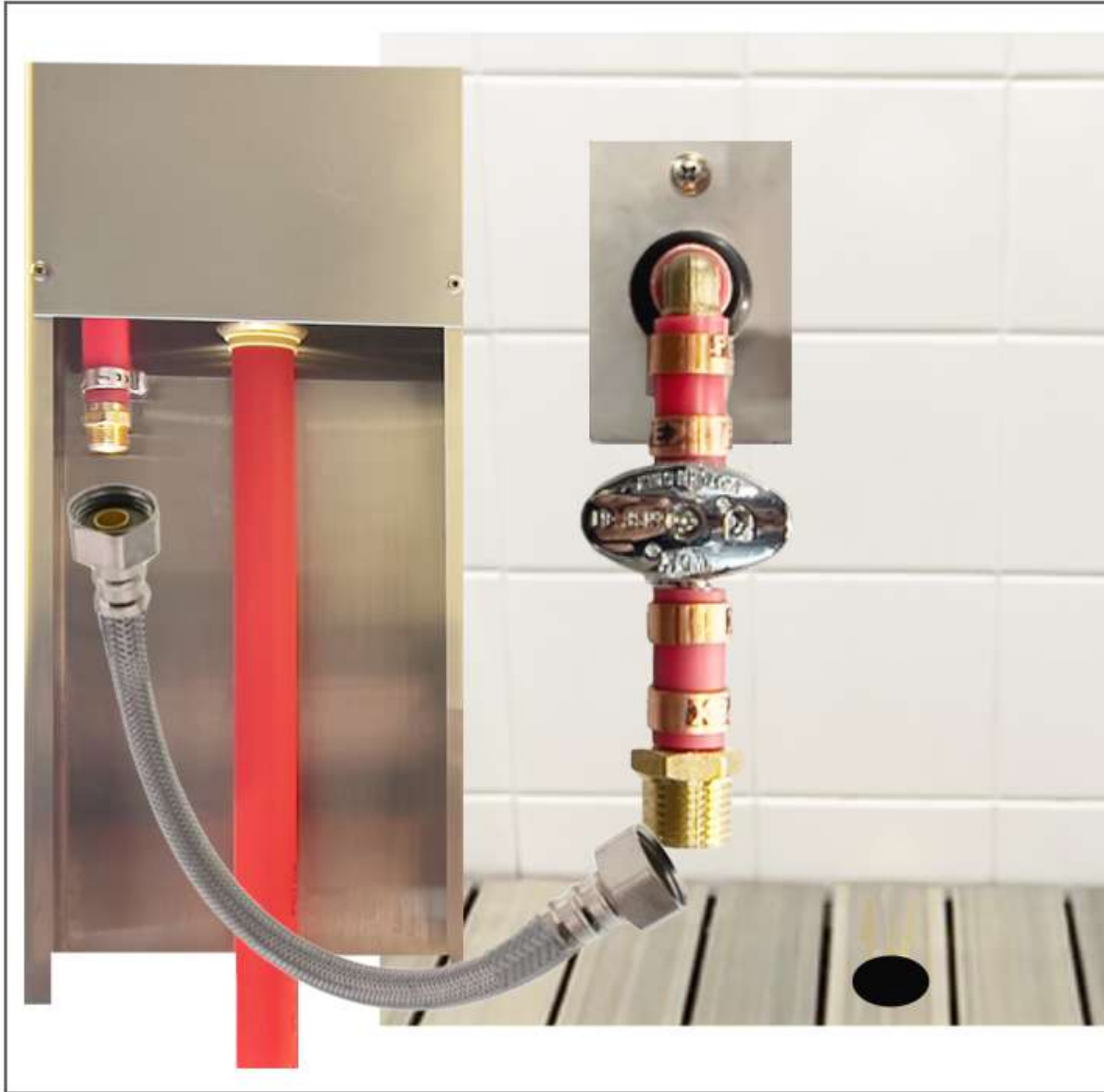
Here is how your shut-off valve should now appear



STEP 10

You can now complete your water connection here, or at a different location that you may have chosen to tap into your hot water line.

Connecting the main system



STEP 10

Rotate the shut-off valve apparatus to a vertical position and connect the water flex line between the shut-off valve and back of unit as shown. Once connected and water-tight, open the shut-off valve and place the unit over the wall connection to conceal it.



Once the the unit is correctly connected to the water line and all looks good, place it in the correct position so it can be affixed to the wall.

This protruding Pex tube must be seated inside the 1 inch hole on the spa floor as shown.



Affix the unit to the wall using the provided hardware and a 5/16 wrench as shown.



Place the top plate firmly inside the top of the unit to complete the installation as shown.